

Protection functions	ANSI code	S20	S24 ⁽⁵⁾	B22	S40 S50	S41 S51	S42 S52	S43 S53	S80	S81	S82	S84
Phase overcurrent ⁽¹⁾	50/51	4	4		4	4	4	4	8	8	8	8
Phase overcurrent cold load pick-up	CLPU 50/51		1		4 ⁽⁶⁾	4 ⁽⁶⁾	4 ⁽⁶⁾	4 ⁽⁶⁾				
Earth fault / Sensitive earth fault ⁽¹⁾	50N/51N 50G/51G	4	4		4	4	4	4	8	8	8	8
Earth fault cold load pick-up	CLPU 50N/51N		1		4 ⁽⁶⁾	4 ⁽⁶⁾	4 ⁽⁶⁾	4 ⁽⁶⁾				
Breaker failure	50BF		1		1	1	1	1	1	1	1	1
Negative sequence / unbalance	46	1	1		2	2	2	2	2	2	2	2
Broken conductor	46BC				1 ⁽⁶⁾	1 ⁽⁶⁾	1 ⁽⁶⁾	1 ⁽⁶⁾				
Thermal overload for cables	49RMS									2	2	2
Directional phase overcurrent ⁽¹⁾	67						2				2	2
Directional earth fault ⁽¹⁾	67N/67NC					2	2	2		2	2	2
Directional active overpower	32P					1	1	1		2	2	2
Directional active underpower	37P											2
Positive sequence undervoltage	27D			2					2	2	2	2
Remanent undervoltage	27R			1					2	2	2	2
Undervoltage (L-L or L-N)	27			2/1 ⁽⁴⁾	2	2	2		4	4	4	4
Overvoltage (L-L or L-N)	59			2	2	2	2		4	4	4	4
Neutral voltage displacement	59N			2	2	2	2		2	2	2	2
Negative sequence overvoltage	47				1	1	1		2	2	2	2
Overfrequency	81H			1	2	2	2		2	2	2	2
Underfrequency	81L			2	4	4	4		4	4	4	4
Rate of change of frequency	81R			1								2
Recloser (4 cycles) ⁽²⁾	79	□	□		□	□	□	□	□	□	□	□
Synchro-check ⁽³⁾	25								□	□	□	□

The figures indicate the number of units available for each protection function

■ standard, □ options.

(1) Protection functions with 2 groups of settings.

(2) According to parameter setting and optional input/output modules.

(3) With optional MCS025 synchro-check module.

(4) 2 undervoltage (L-L) and 1 undervoltage (L-N).

(5) Applications S24 and T24 perform the functions of applications S23 and T23 respectively.

(6) Only for applications S50, S51, S52, S53, T50, T52.

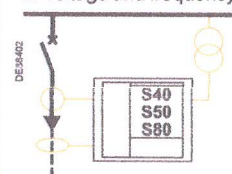
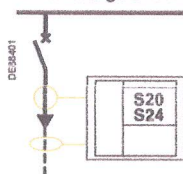
Feeder protection

■ feeder short-circuit and overload protection.

Protection of low-capacitance feeders in impedance earthed or solidly earthed neutral systems: Sepam S20, S24, S40, S50 or S80

■ no voltage and frequency monitoring.

■ voltage and frequency monitoring.



Protection of high-capacitance feeders in impedance earthed or compensated or isolated neutral systems: Sepam S41, S43, S51, S53 or S81

■ specific feeder protection: 67N/67NC.

